

MANCORP
QUALITY HOMES

PO Box 1305
Caboolture Qld 4510
Office (07) 54952011
Fax: (07) 54952677
ACN: 065 955 179

NOTE :
* ALL CONSTRUCTION TO BE IN ACCORDANCE WITH BUILDING CODE OF AUSTRALIA AND AS. 1684.2 - 1999 TIMBER FRAMING MANUAL.
* WINDOW CODES DENOTE HEIGHT x WIDTH e.g. 1218 - 1200 HIGH x 1800 WIDE.
* DIMENSIONS TO BE VERIFIED BY CONTRACTORS PRIOR TO PREPARATION OF SHOP DRAWINGS OR MANUFACTURING. DIMENSIONS TAKE PREFERENCE OVER SCALE.

© 2011 MANCORP

CLIENT
MANCORP QUALITY HOMES

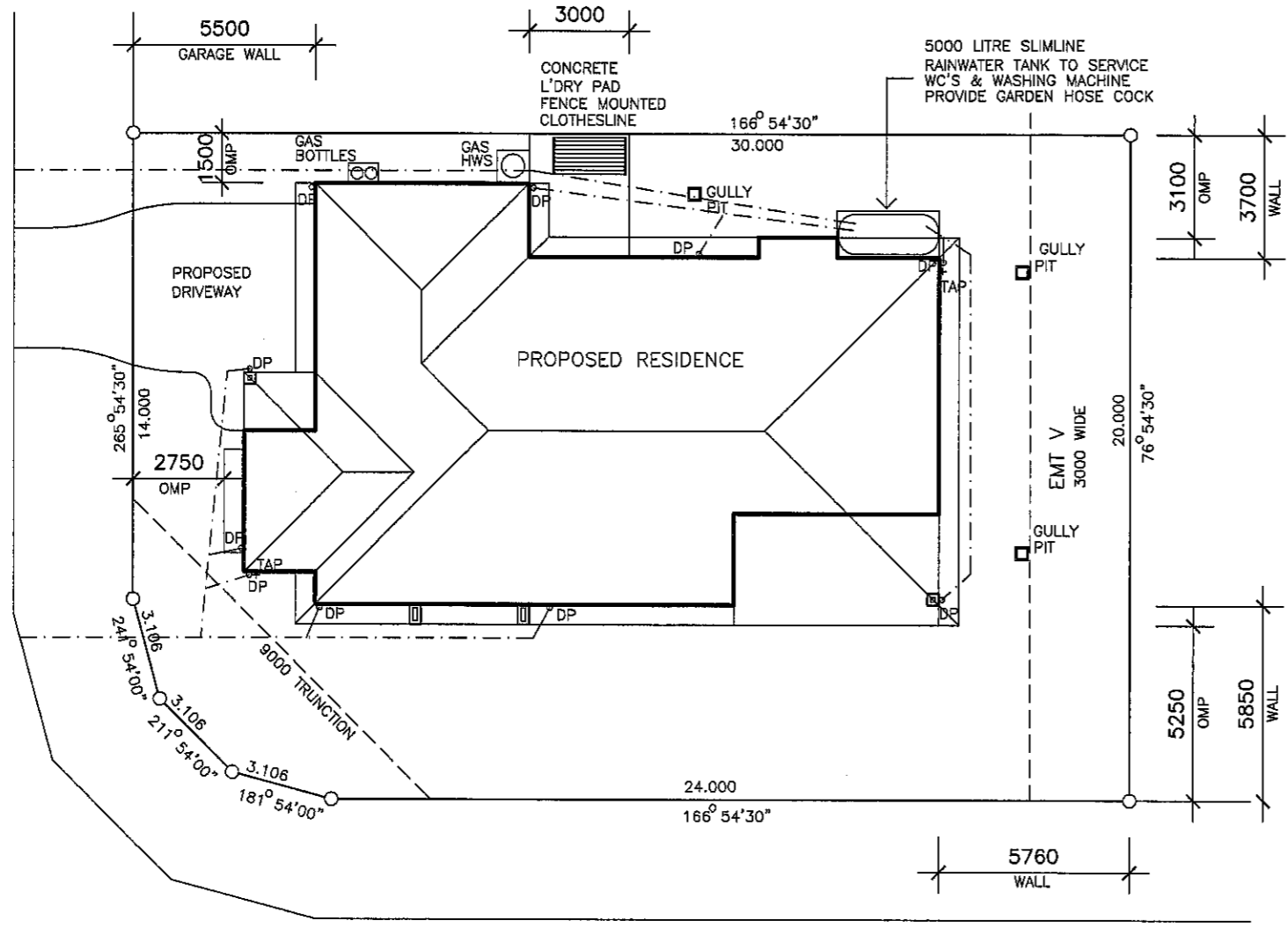
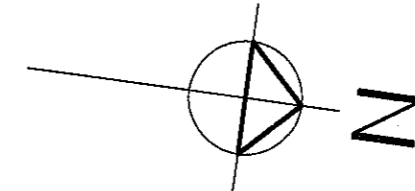
PROJECT
PROPOSED RESIDENCE

LOCATION
**LOT 113
CABLE CRESCENT,
MOUNTAIN CREEK,
BRIGHTWATER**

AMENDMENTS

ISSUE	DATE	DESCRIPTION
A	14/10/11	PRELIMINARY
B	18/10/11	600 x 350 BLADES

DRAWN: A.WATTS	CHECKED:
DATE: 18/10/11	SCALE: AS SHOWN
JOB NO.	SHEET No. 1 OF 3



CABLE CRESCENT

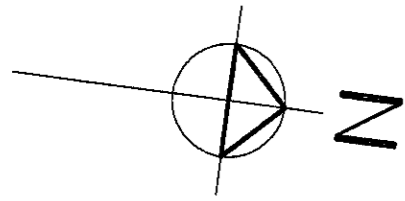
NOTE
DRAWING SYMBOLS USED ON THIS DRAWING ARE NOT TRUE REPRESENTATION OF ITEMS INCLUDED IN CONTRACT. REFER TO CONTRACT FOR SPECIFIED ITEMS

NOTE
STORMWATER TO DISCHARGE INTO EXIST. STORMWATER LINES & RETICULATE TO EXIST. LAWFULL POINT OF DISCHARGE
ALL STORMWATER LINES TO HAVE MINIMUM 100mm COVER.
STORMWATER LINES SHOWN ARE INDICATIVE ONLY
THE CONTRACTOR IS RESPONSIBLE TO ENSURE COMPLIANCE WITH AS.3500, AS.2870 AND BCA
LEVELS SHOWN REFERENCED TO AHD

AREA	
LIVING	203.7
PORCH	3.8
ALFRESCO	16.8
TOTAL	224.3sq.m.
AREA OF SITE	591 sq.m.
SITE COVER	38.0%

REAL PROPERTY DESCRIPTION
LOT 113 ON SP231384
PARISH : MOOLOOLAH
COUNTY: CANNING
AREA : 591 sq.m.

SITE PLAN
SCALE 1:200

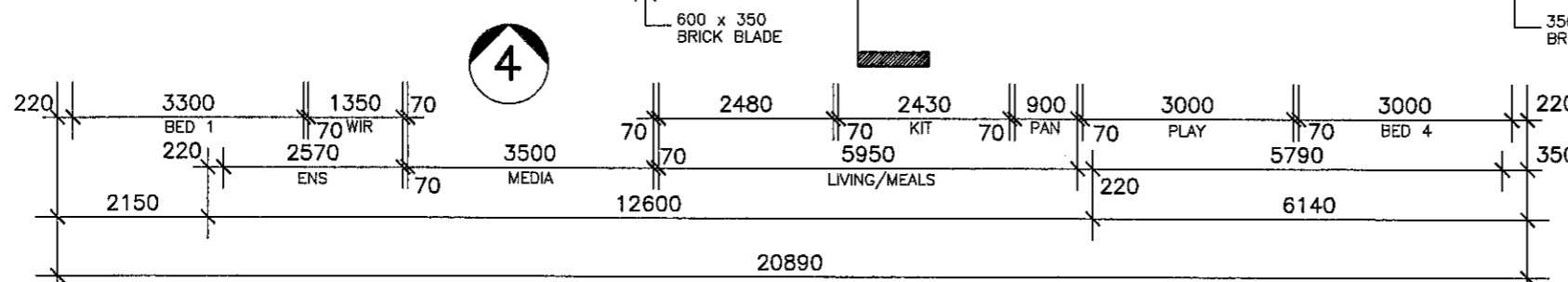
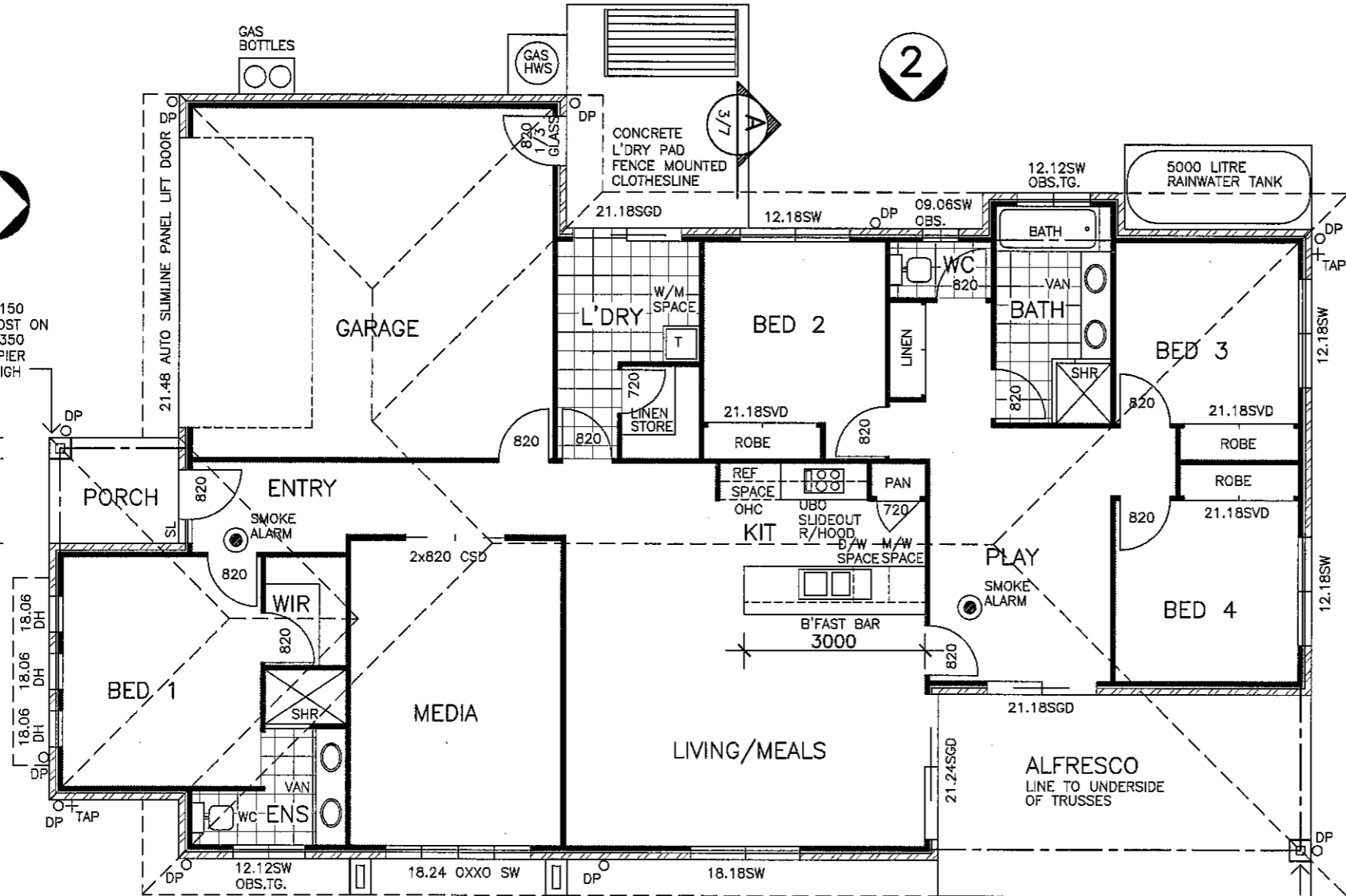
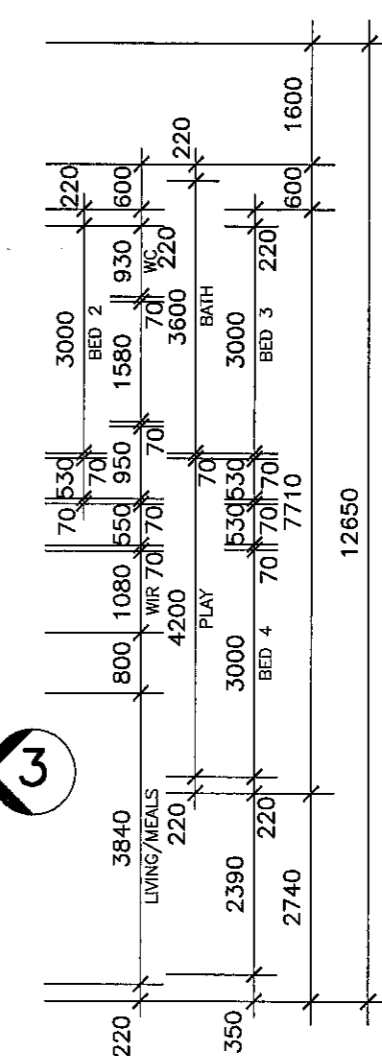
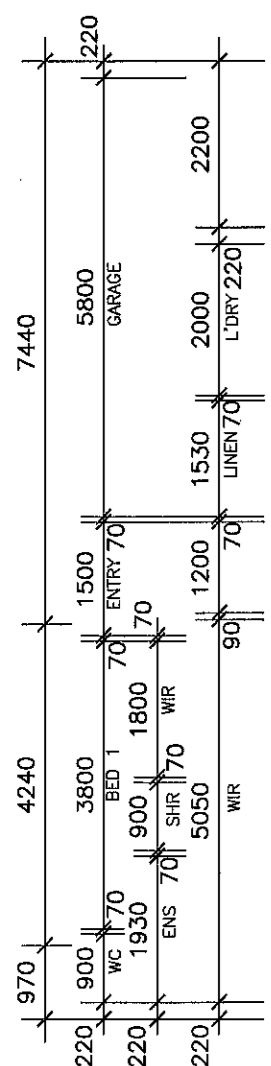
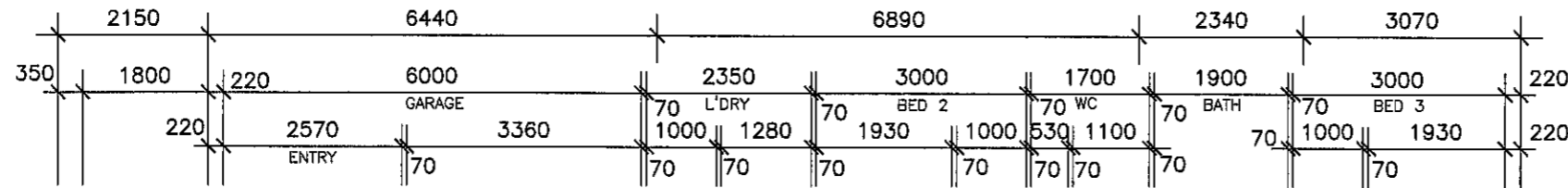


NOTE
DRAWING SYMBOLS USED ON THIS
DRAWING ARE NOT TRUE REPRESENTATION
OF ITEMS INCLUDED IN CONTRACT.
REFER TO CONTRACT FOR SPECIFIED ITEMS

APPROVED SMOKE DETECTOR LOCATED ON OR NEAR CEILING TO COMPLY WITH AS. 3786
 SOLID WALLS INDICATE TIMBER CONSTRUCTION
 HATCHED WALLS INDICATE MASONRY CONSTRUCTION



PO Box 1305
Caboolture Qld 4510
Office (07) 54952011
Fax: (07) 54952677
ACN: 065 955 179



NOTE :
* ALL CONSTRUCTION TO BE IN ACCORDANCE WITH BUILDING CODE OF AUSTRALIA AND AS. 1684.2 - 1999 TIMBER FRAMING MANUAL.
* WINDOW CODES DENOTE HEIGHT x WIDTH e.g. 1218 - 1200 HIGH x 1800 WIDE.
* DIMENSIONS TO BE VERIFIED BY CONTRACTORS PRIOR TO PREPARATION OF SHOP DRAWINGS OR MANUFACTURING. DIMENSIONS TAKE PREFERENCE OVER SCALE.

©2011 MANCORP

CLIENT
MANCORP QUALITY HOMES

PROJECT
PROPOSED RESIDENCE

LOCATION
**LOT 113
CABLE CRESCENT,
MOUNTAIN CREEK,
BRIGHTWATER**

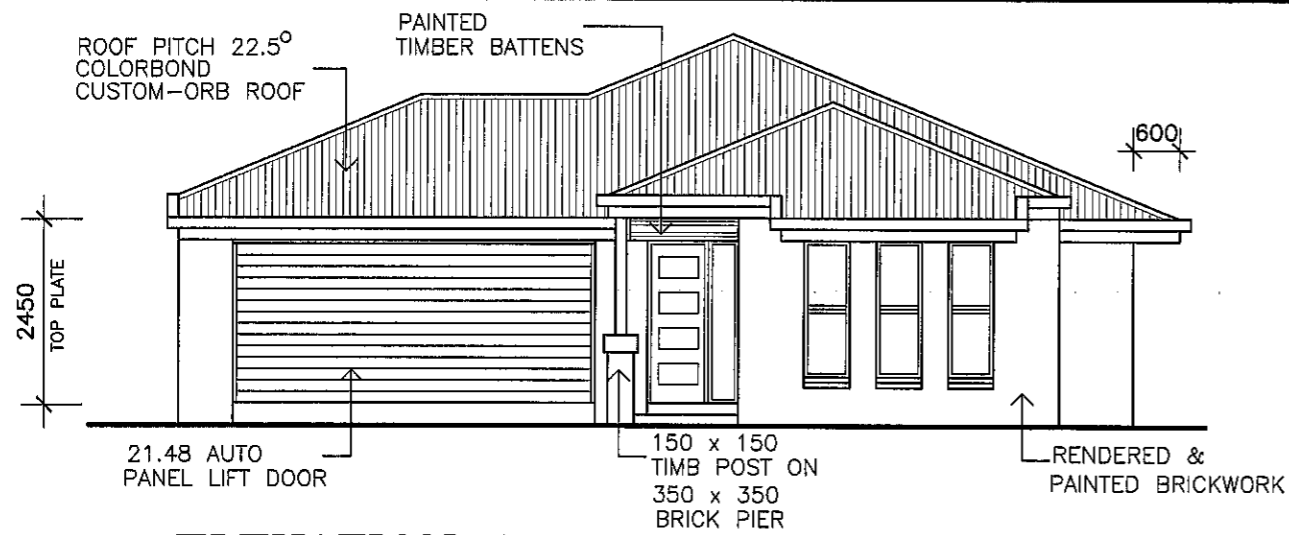
AMENDMENTS

ISSUE	DATE	DESCRIPTION
A	14/10/11	PRELIMINARY
B	18/10/11	600 x 350 BLADES

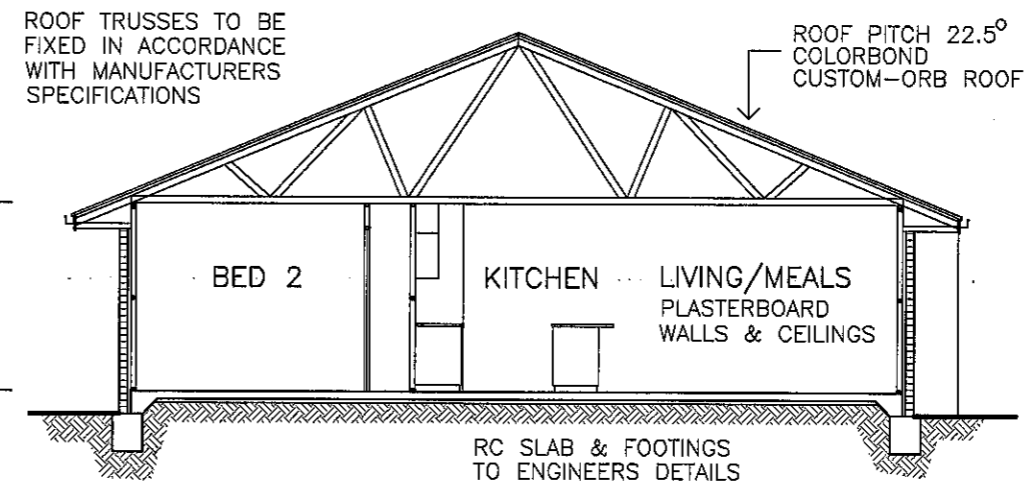
AREA	
LIVING	203.7
PORCH	3.8
ALFRESCO	16.8
TOTAL	224.3sq.m.
AREA OF SITE	591 sq.m.
SITE COVER	38.0%

FLOOR PLAN
SCALE 1:100

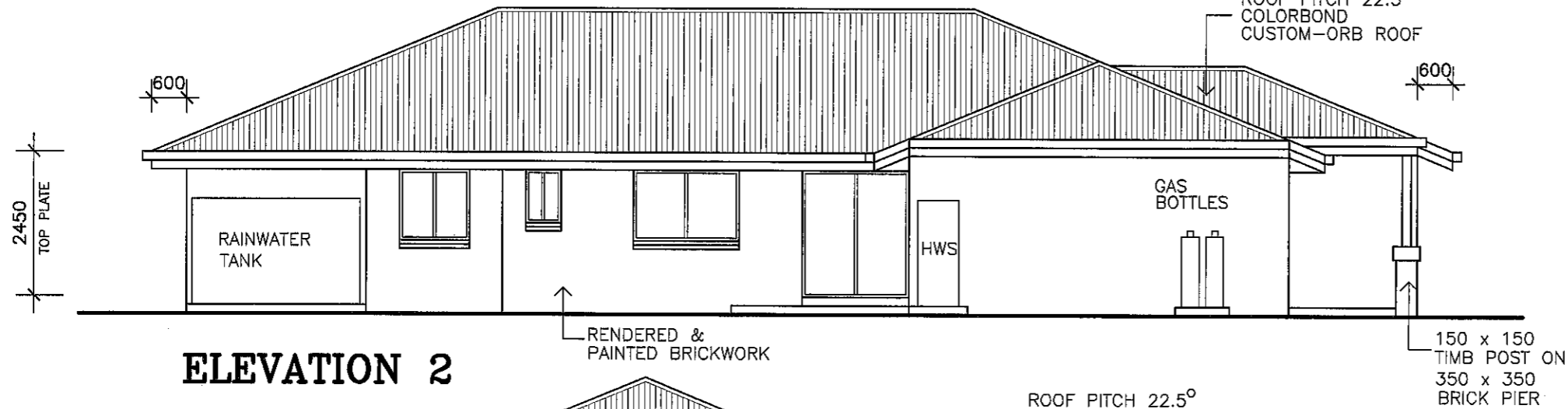
DRAWN: A.WATTS CHECKED:
DATE: 18/10/11 SCALE: AS SHOWN
JOB NO. SHEET No. 2 OF 3



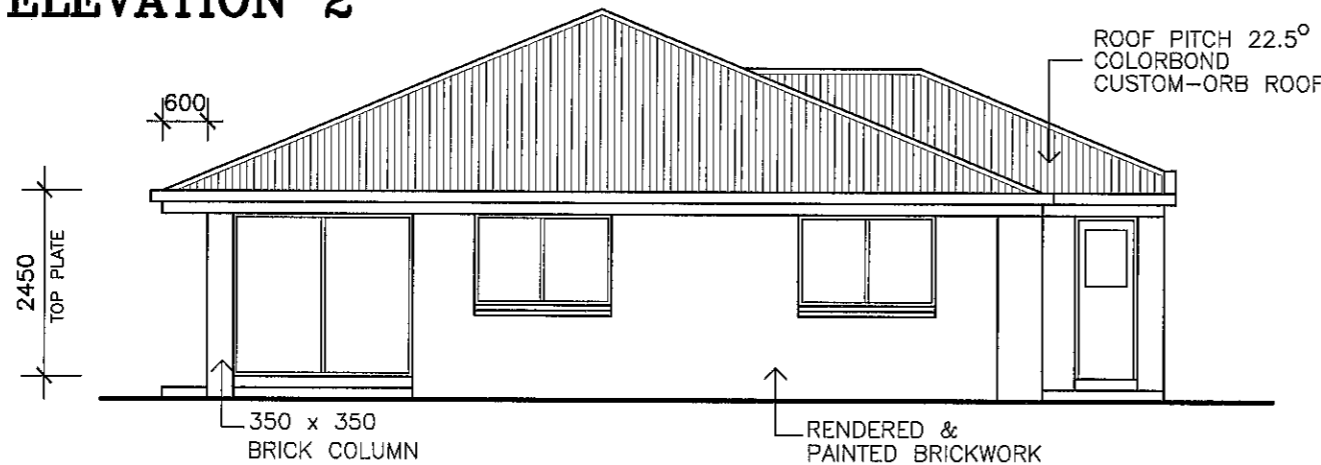
ELEVATION 1



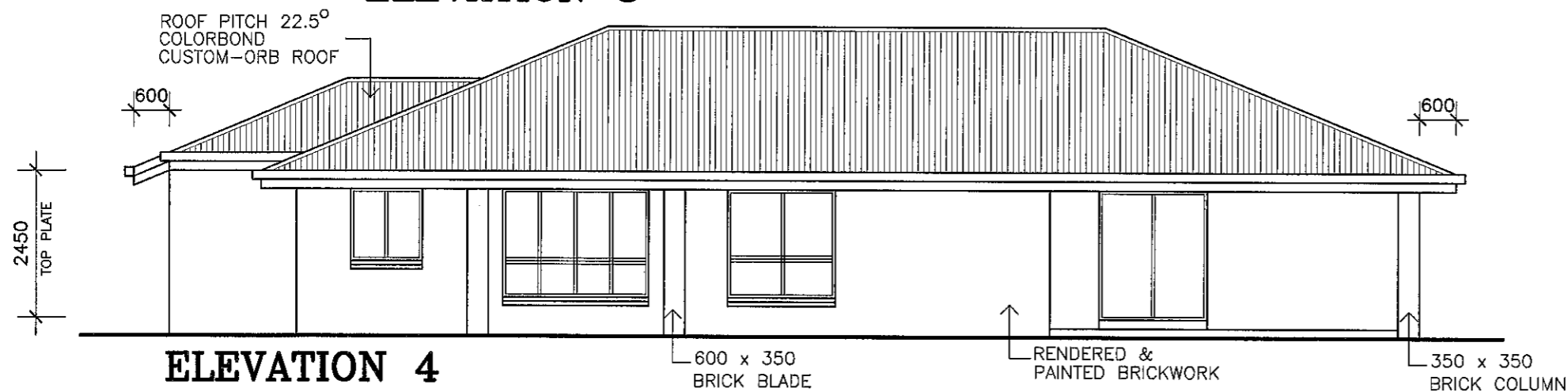
SECTION A



ELEVATION 2



ELEVATION 3



ELEVATION 4



MANCORP
QUALITY HOMES

PO Box 1305
Caboolture Qld 4510
Office (07) 54952011
Fax: (07) 54952677
ACN: 065 955 179

NOTE :
* ALL CONSTRUCTION TO BE IN ACCORDANCE WITH BUILDING CODE OF AUSTRALIA AND AS. 1684.2 - 1999 TIMBER FRAMING MANUAL.
* WINDOW CODES DENOTE HEIGHT x WIDTH e.g. 1218 - 1200 HIGH x 1800 WIDE.
* DIMENSIONS TO BE VERIFIED BY CONTRACTORS PRIOR TO PREPARATION OF SHOP DRAWINGS OR MANUFACTURING. DIMENSIONS TAKE PREFERENCE OVER SCALE.

© 2011 MANCORP

CLIENT
MANCORP QUALITY HOMES

PROJECT
PROPOSED RESIDENCE

LOCATION
**LOT 113
CABLE CRESCENT,
MOUNTAIN CREEK.
BRIGHTWATER**

AMENDMENTS

ISSUE	DATE	DESCRIPTION
A	14/10/11	PRELIMINARY
B	18/10/11	600 x 350 BLADES

DRAWN: A.WATTS	CHECKED:
DATE: 18/10/11	SCALE: AS SHOWN
JOB NO.	SHEET No. 3 OF 3