

MANCOP
QUALITY HOMES

PO Box 1305
Caboolture Qld 4510
Office (07) 54952011
Fax: (07) 54952677
ACN: 065 955 179

NOTE :
* ALL CONSTRUCTION TO BE IN ACCORDANCE WITH BUILDING CODE OF AUSTRALIA AND AS. 1684.2 - 1999 TIMBER FRAMING MANUAL.
* WINDOW CODES DENOTE HEIGHT x WIDTH e.g. 1218 - 1200 HIGH x 1800 WIDE.
* DIMENSIONS TO BE VERIFIED BY CONTRACTORS PRIOR TO PREPARATION OF SHOP DRAWINGS OR MANUFACTURING. DIMENSIONS TAKE PREFERENCE OVER SCALE.

© 2010 MANCOP

CLIENT
MANCOP QUALITY HOMES.

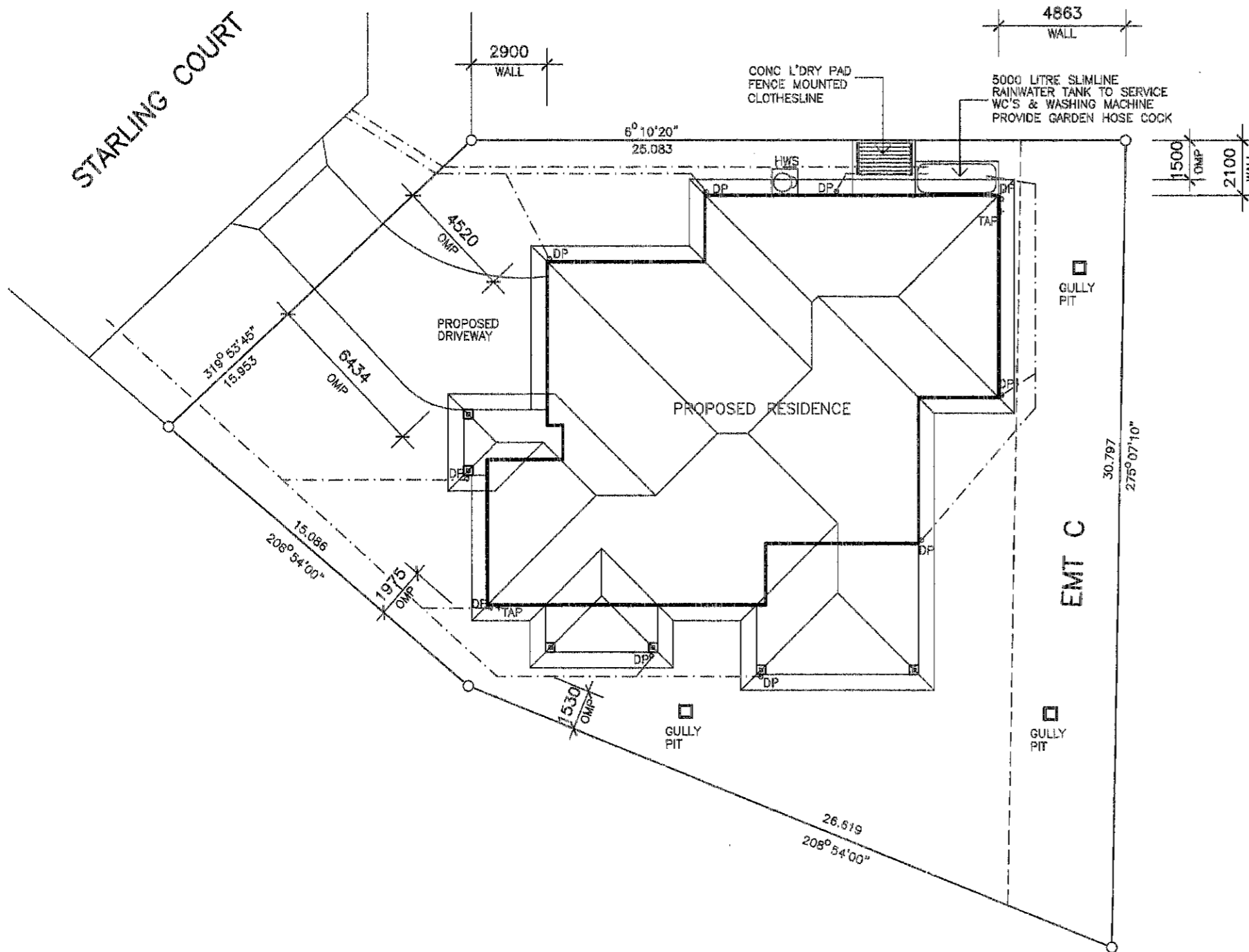
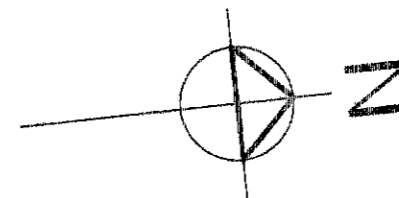
PROJECT
PROPOSED RESIDENCE

LOCATION
**LOT 536
STARLING COURT
FOREST RIDGE.**

AMENDMENTS

ISSUE	DATE	DESCRIPTION
A	13/03/10	PRELIMINARY

DRAWN: A.WATTS	CHECKED:
DATE: 13/03/10	SCALE: AS SHOWN
JOB NO.	SHEET No. 1 OF 4



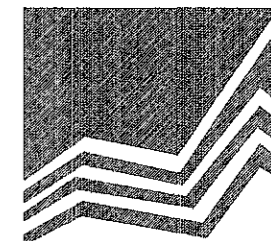
BUILDING AREA	
LIVING	229.1
PORCH	7.4
ALFRESCO	30.3
PATIO	7.7
TOTAL	274.5sq.m.
AREA OF SITE	752 sq.m.
SITE COVER	36.5%

NOTE
STORMWATER TO DISCHARGE INTO EXIST. STORMWATER LINES & RETICULATE TO EXIST. LAWFULL POINT OF DISCHARGE
ALL STORMWATER LINES TO HAVE MINIMUM 100mm COVER.
STORMWATER LINES SHOWN ARE INDICATIVE ONLY
THE CONTRACTOR IS RESPONSIBLE TO ENSURE COMPLIANCE WITH AS.3500, AS.2870 AND BCA

REAL PROPERTY DESCRIPTION
LOT 536 ON SP212353
PARISH: BURPENGARY
COUNTY: STANLEY
AREA : 752 sq.m.

NOTE
DRAWING SYMBOLS USED ON THIS DRAWING ARE NOT TRUE REPRESENTATION OF ITEMS INCLUDED IN CONTRACT. REFER TO CONTRACT FOR SPECIFIED ITEMS

SITE PLAN
SCALE 1: 200



MANCORP
QUALITY HOMES

PO Box 1305
Caboolture Qld 4510
Office (07) 54952011
Fax: (07) 54952677
ACN: 065 955 179

NOTE :

* ALL CONSTRUCTION TO BE IN ACCORDANCE WITH BUILDING CODE OF AUSTRALIA AND AS. 1884.2 - 1999 TIMBER FRAMING MANUAL.

* WINDOW CODES DENOTE HEIGHT x WIDTH e.g. 1218 - 1200 HIGH x 1800 WIDE.

* DIMENSIONS TO BE VERIFIED BY CONTRACTORS PRIOR TO PREPARATION OF SHOP DRAWINGS OR MANUFACTURING. DIMENSIONS TAKE PREFERENCE OVER SCALE.

©2010 MANCORP

CLIENT

MANCORP QUALITY HOMES.

PROJECT

PROPOSED RESIDENCE

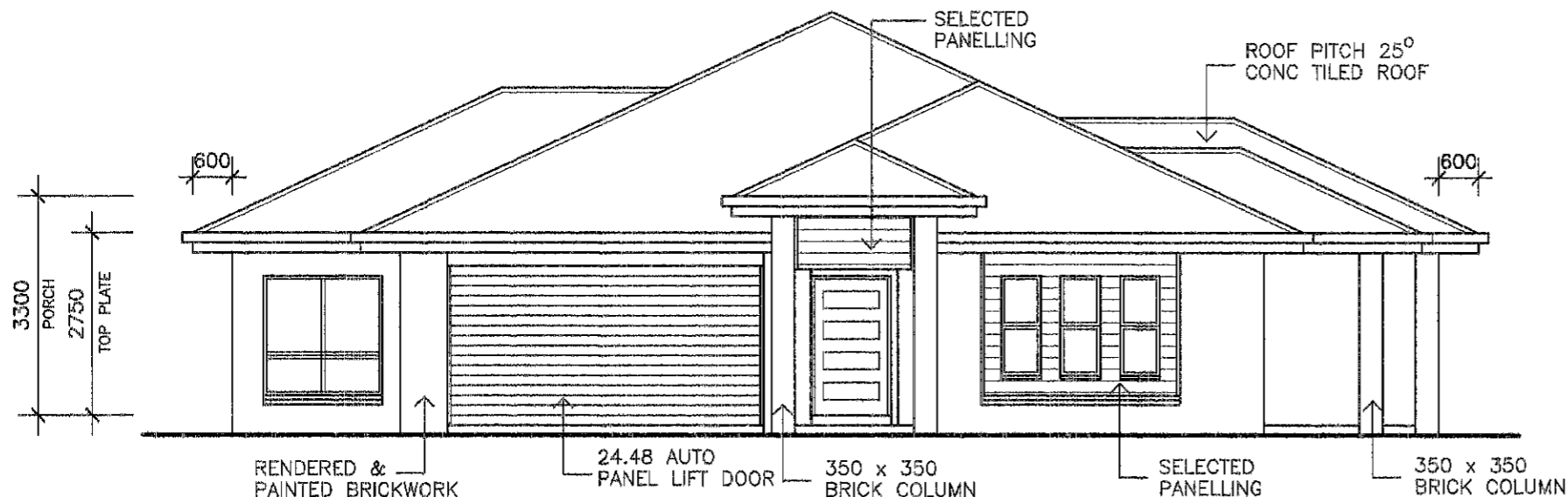
LOCATION

**LOT 536
STARLING COURT
FOREST RIDGE.**

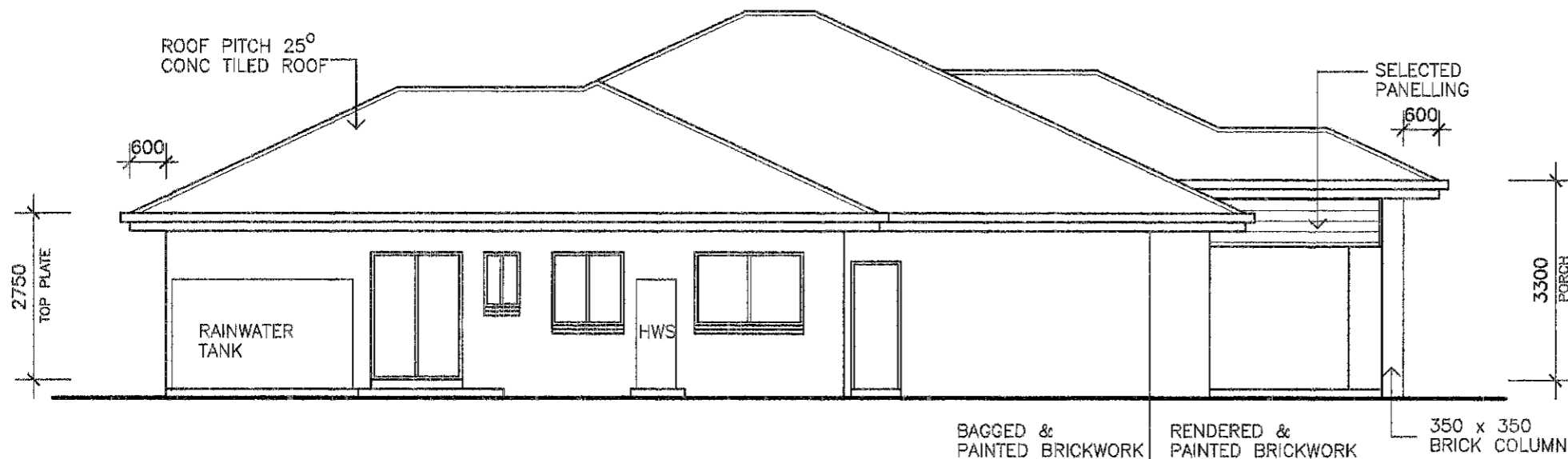
AMENDMENTS

ISSUE	DATE	DESCRIPTION
A	13/03/10	PRELIMINARY

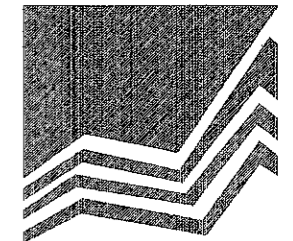
DRAWN: A.WATTS	CHECKED:
DATE: 13/03/10	SCALE: AS SHOWN
JOB NO.	SHEET No. 3 OF 4



ELEVATION 1



ELEVATION 2



MANCORP
QUALITY HOMES

PO Box 1305
Caboolture Qld 4510
Office (07) 54952011
Fax: (07) 54952677
ACN: 065 955 179

NOTE :
* ALL CONSTRUCTION TO BE IN ACCORDANCE WITH BUILDING CODE OF AUSTRALIA AND AS. 1684.2 - 1999 TIMBER FRAMING MANUAL.
* WINDOW CODES DENOTE HEIGHT x WIDTH e.g. 1218 - 1200 HIGH x 1800 WIDE.
* DIMENSIONS TO BE VERIFIED BY CONTRACTORS PRIOR TO PREPARATION OF SHOP DRAWINGS OR MANUFACTURING. DIMENSIONS TAKE PREFERENCE OVER SCALE.

© 2010 MANCORP

CLIENT
MANCORP QUALITY HOMES.

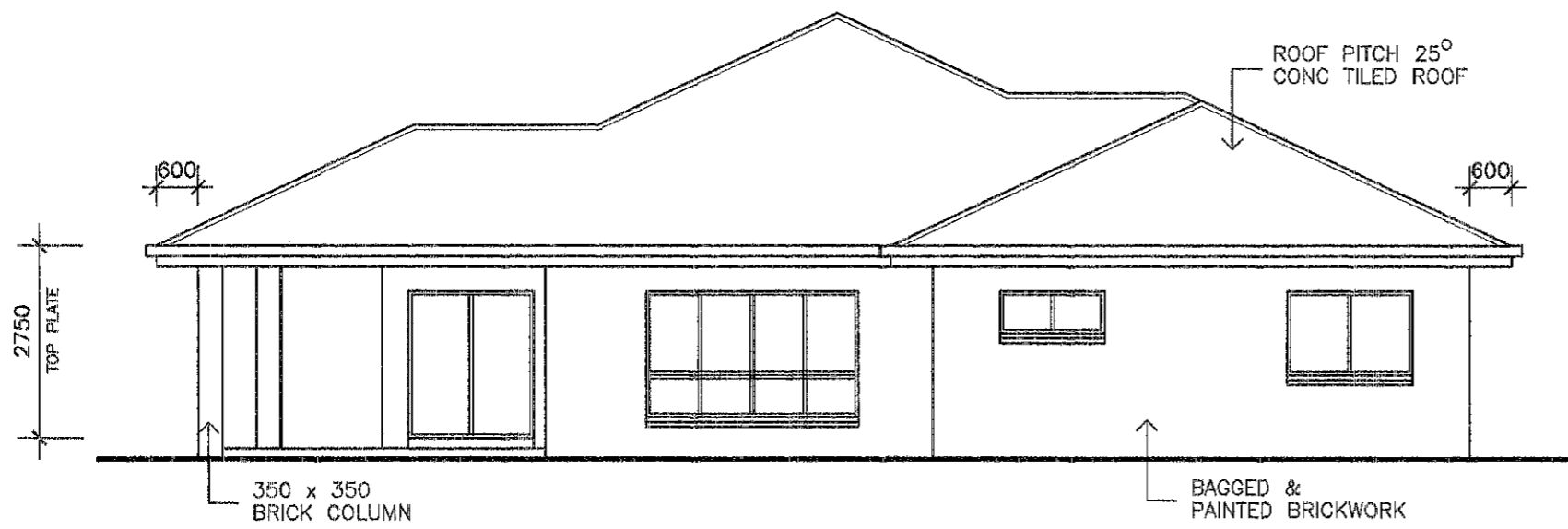
PROJECT
PROPOSED RESIDENCE

LOCATION
**LOT 536
STARLING COURT
FOREST RIDGE.**

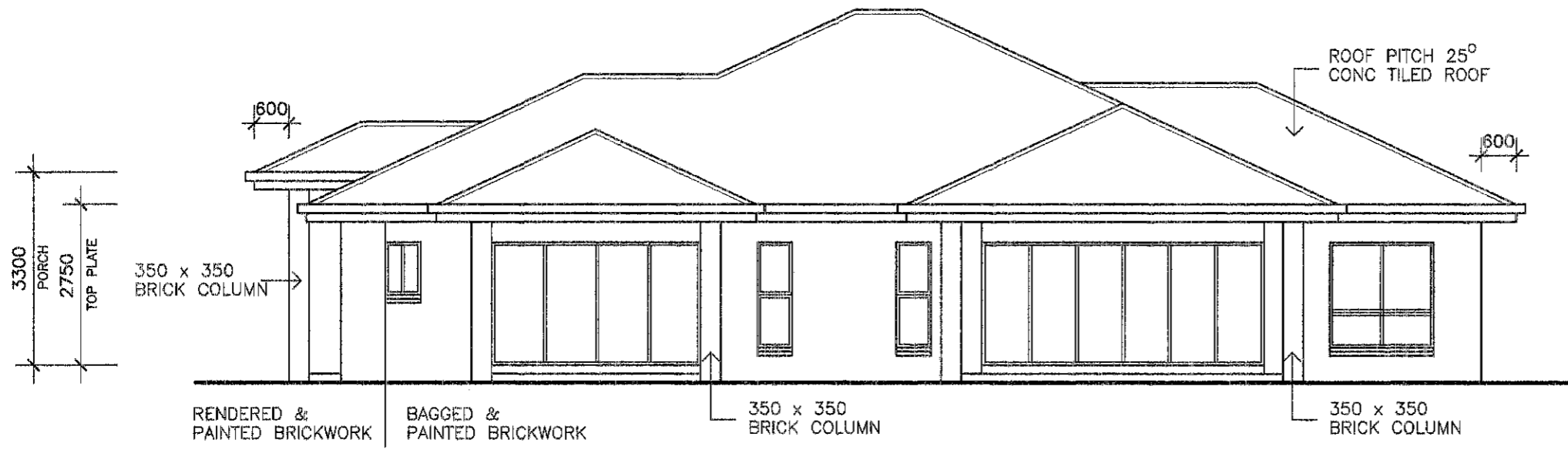
AMENDMENTS

ISSUE	DATE	DESCRIPTION
A	13/03/10	PRELIMINARY

DRAWN: A.WATTS	CHECKED:
DATE: 13/03/10	SCALE: AS SHOWN
JOB NO.	SHEET No. 4 OF 4



ELEVATION 3



ELEVATION 4