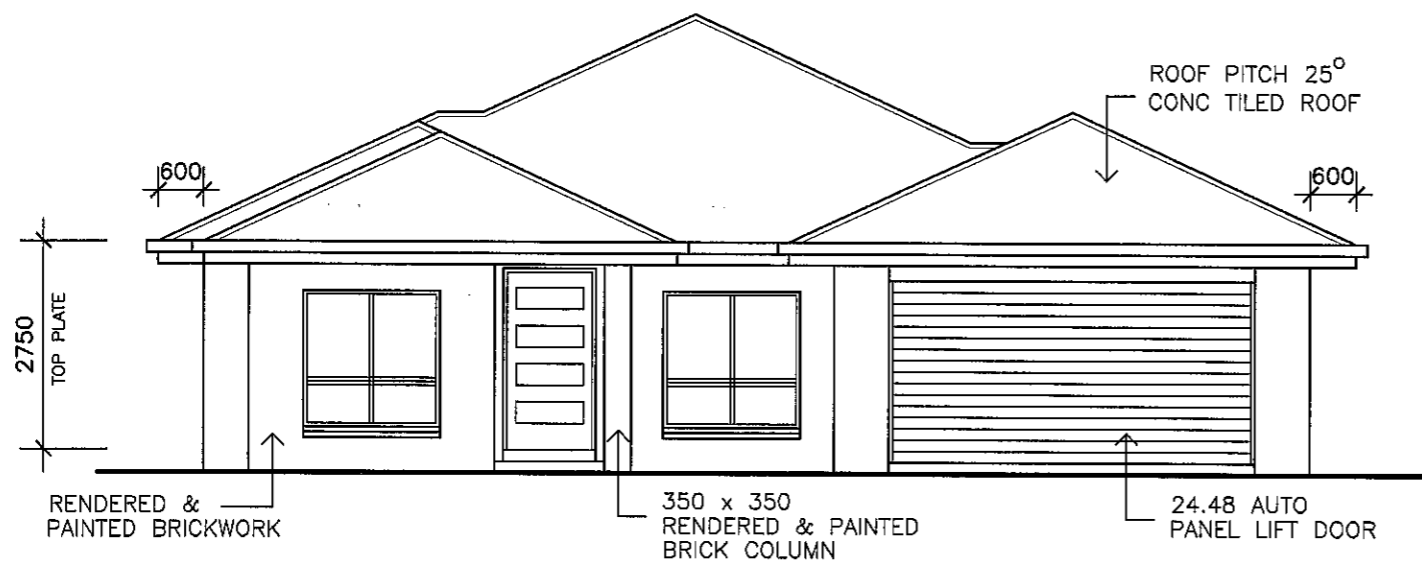
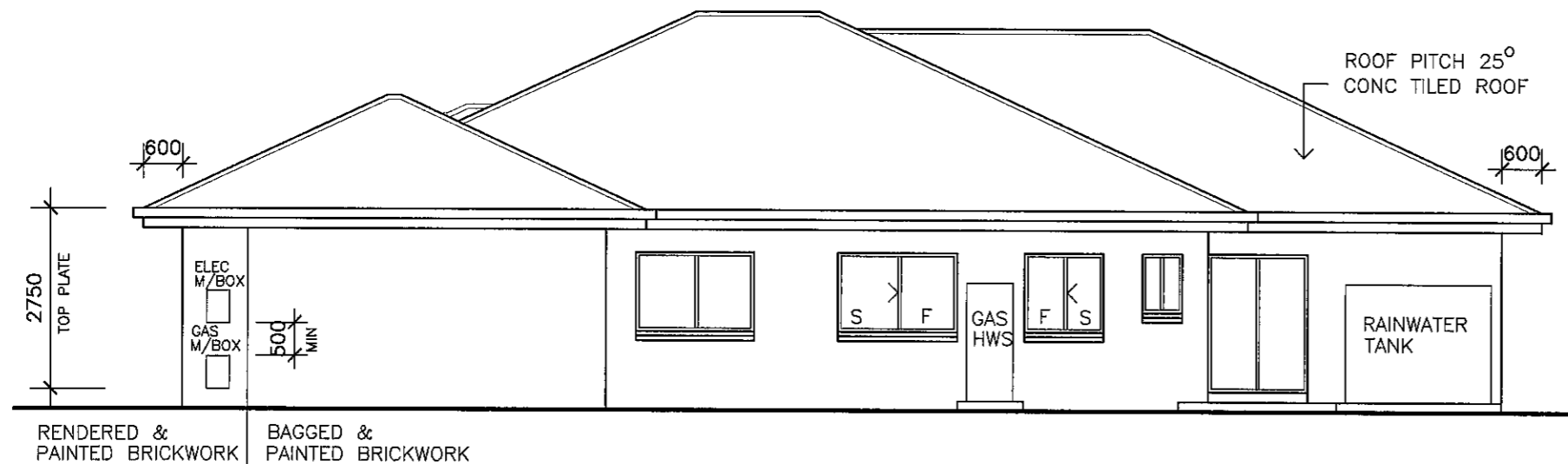


MANCORP
QUALITY HOMES

PO Box 1305
Caboolture Qld 4510
Office (07) 54952011
Fax: (07) 54952677
ACN: 065 955 179



ELEVATION 1



ELEVATION 2

NOTE :

* ALL CONSTRUCTION TO BE IN ACCORDANCE WITH BUILDING CODE OF AUSTRALIA AND AS. 1684.2 - 1999 TIMBER FRAMING MANUAL.

* WINDOW CODES DENOTE HEIGHT x WIDTH e.g. 1218 - 1200 HIGH x 1800 WIDE.

* DIMENSIONS TO BE VERIFIED BY CONTRACTORS PRIOR TO PREPARATION OF SHOP DRAWINGS OR MANUFACTURING. DIMENSIONS TAKE PREFERENCE OVER SCALE.

© 2010 MANCORP

CLIENT
MANCORP DEVELOPMENT GROUP

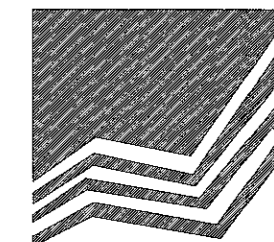
PROJECT
PROPOSED RESIDENCE

LOCATION
**LOT 545
KOEL DRIVE,
FOREST RIDGE.**

AMENDMENTS

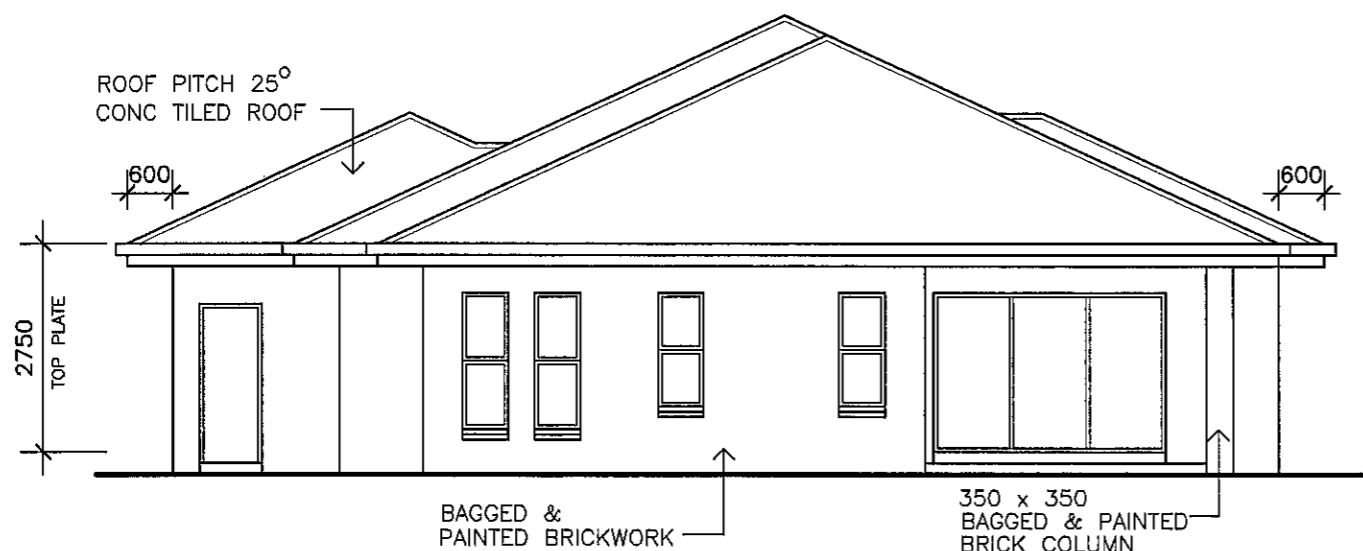
ISSUE	DATE	DESCRIPTION
A	4/02/10	PRELIMINARY

DRAWN: A.WATTS	CHECKED:
DATE: 4/02/10	SCALE: AS SHOWN
JOB NO.	SHEET No. 3 OF 4



MANCORP
QUALITY HOMES

PO Box 1305
Caboolture Qld 4510
Office (07) 54952011
Fax: (07) 54952677
ACN: 065 955 179



ELEVATION 3



ELEVATION 4

NOTE :
* ALL CONSTRUCTION TO BE IN ACCORDANCE WITH BUILDING CODE OF AUSTRALIA AND AS. 1684.2 - 1999 TIMBER FRAMING MANUAL.
* WINDOW CODES DENOTE HEIGHT x WIDTH e.g. 1218 - 1200 HIGH x 1800 WIDE.
* DIMENSIONS TO BE VERIFIED BY CONTRACTORS PRIOR TO PREPARATION OF SHOP DRAWINGS OR MANUFACTURING. DIMENSIONS TAKE PREFERENCE OVER SCALE.

© 2010 MANCORP

CLIENT
MANCORP DEVELOPMENT GROUP

PROJECT
PROPOSED RESIDENCE

LOCATION
**LOT 545
KOEL DRIVE,
FOREST RIDGE.**

AMENDMENTS

ISSUE	DATE	DESCRIPTION
A	4/02/10	PRELIMINARY

DRAWN: A.WATTS	CHECKED:
DATE: 4/02/10	SCALE: AS SHOWN
JOB NO.	SHEET No. 4 OF 4